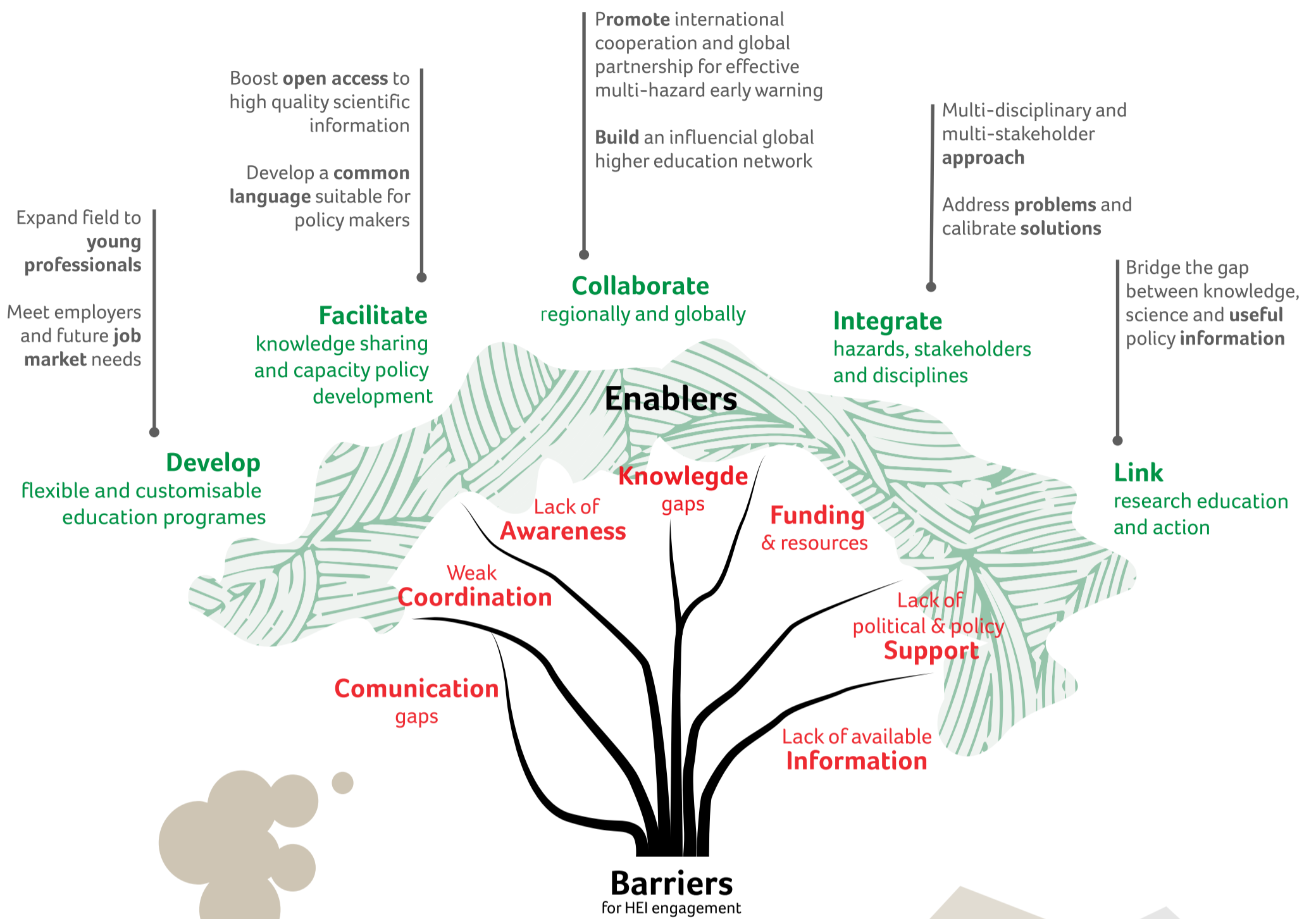


Building Disaster Resilience in Coastal Regions of Asia



What is the role of HEIs in developing effective Multi-Hazard Early Warning and building disaster resilience?

CABARET emphasises the role of Higher Education in supporting global priorities and targets on disaster risk reduction. The project has provided capacity development to support regional cooperation on multi-hazard early warning in coastal communities, with a particular focus on Asia.

<http://cabaret.buildresilience.org>



Co-funded by the Erasmus+ Programme of the European Union



The European Commission support for the production of this presentation does not constitute an endorsement of the contents which reflects the views only of the authors, and the Commission cannot be held responsible for any use which may be made of the information contained therein.

